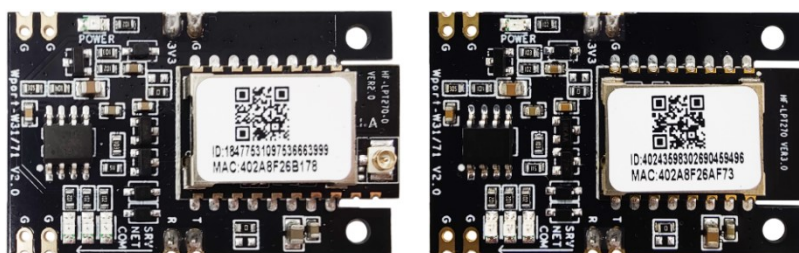


Wport-W71-X(2M)

UART To Wi-Fi+BLE Collection Module

User Manual

V 1.2



Product Features

- ◇ Supports WiFi 802.11b/g/n wireless standards
- ◇ Adopting RISC architecture SOC chip, with a maximum frequency of 160MHz, 276KB RAM, 2MB Flash, based on FreeRTOS system
- ◇ Support BLE 5.0 for diagnostic or local Bluetooth debugging and data collection functions
- ◇ Supports UART TTL to WiFi data transmission, with a maximum serial port rate of 460800bps
- ◇ Support photovoltaic energy management platforms, web pages or apps to monitor energy data
- ◇ Supports different types of antenna options: built-in PCB antenna, external 1st generation IPEX interface
- ◇ 3.3V single power supply
- ◇ Size:
 - Wport-W71-X(2M): 40±0.3mm x 25.1±0.2mm x 4.5±0.3mm
 - Wport-W71-AA-X(2M): 40±0.3mm x 25.1±0.2mm x 13.3±0.3mm

TABLE OF CONTENTS

TABLE OF CONTENTS	2
FIGURE	3
TABLE	3
1. PRODUCT OVERVIEW	4
1.1. Overview	4
1.2. Product Parameters	4
1.3. Main Application Areas	5
2. HARDWARE INTRODUCTION	6
2.1. Hardware Introduction	6
2.1.1. Wport-W71 Pin Definition	7
2.2. Wport-W71 Mechanical Dimensions	8
2.3. Internal Antenna	10
2.4. External Antenna	11
2.5. Product Number	12
2.6. Typical Applications	13
2.6.1. UART Application Hardware Connection	13
APPENDIX A: CONTACT INFORMATION	14

FIGURE

Figure 1.	Wport-W71-0(2M) Appearance Diagram	6
Figure 2.	Wport-W71-1(2M) Appearance Diagram	6
Figure 3.	Wport-W71-AA-0(2M) Appearance Diagram	6
Figure 4.	Wport-W71-AA-1(2M) Appearance Diagram	7
Figure 5.	Wport-W71 Pin Definition.....	7
Figure 6.	Wport-W71-1/0(2M) Mechanical Dimensions	9
Figure 7.	Wport-W71-1/0(2M)-AA Mechanical Dimensions	10
Figure 8.	Recommended Placement Area For Module	11
Figure 9.	1st Generation IPEX Pad Size	11
Figure 10.	Wport-W71-X(2M) Product Number Definition	12
Figure 11.	UART Application Hardware Connection	13

TABLE

Table1.	Wport-W71-X(2M) Product Technical Parameters	4
Table2.	Wport-W71 Pin Function Definition.....	7
Table3.	Requirements for External Antenna Parameters	11

历史记录

V 1.1 2023-08-15 correction Pin function description

V 1.2 2023-12-28 Update Wport-W71-AA-X(2M) name

1. PRODUCT OVERVIEW

1.1. Overview

The Wport-W71-X (2M) module adopts a WiFi+BLE data transmission method, which facilitates the collection and monitoring of data from inverters, energy storage and other devices. The protection level is IP65, suitable for harsh outdoor scenarios, and the sub models support different interfaces to adapt to external devices.

Wport-W71-X (2M) is equipped with rich network protocols and integrated with TTL standard data transmission interfaces, without the need for any driver programs. It is convenient for traditional serial device networking and docking with photovoltaic energy management, suitable for the photovoltaic energy industry.

1.2. Product Parameters

Table1. Wport-W71-X(2M) Product Technical Parameters

Classification	Parameters
System Information	
Processor/Main Frequency	RISC 160MHz
Flash	2MB
RAM	276KB
Operating System	FreeRTOS
Wi-Fi Interface	
Wireless Standards	802.11 b/g/n
Frequency Range	2.412GHz ~ 2.472GHz
Network Mode	STA/AP/STA+AP
Security Type	WEP/WPA-PSK/WPA2-PSK/WPA3-SAE
Encryption	WEP64/WEP128/TKIP/AES
Transmitting Power	802.11b: +17dBm \pm 1.5dBm (@11Mbps) 802.11g: +15dBm \pm 1.5dBm (@54Mbps) 802.11n: +14dBm \pm 1.5dBm (@HT20, MCS7)
Receiving Sensitivity	802.11b: -96dBm (@1Mbps) 802.11b: -89dBm (@11Mbps) 802.11g: -91dBm (@6Mbps) 802.11g: -76dBm (@54Mbps) 802.11n: -91dBm (@MCS0) 802.11n: -73dBm (@MCS7)
Antenna Option	Internal PCB or external 1st generation IPEX
BLE Interface	
Wireless Standards	BLE5.0
Frequency Range	2.402GHz ~ 2.480GHz
Transmitting Power	Max 15dBm

Receiving Sensitivity	-97dBm
Antenna Option	Same as Wi-Fi interface
Serial Port	
Number of Port	1+1(Debug)
Interface Standard	TTL 3.3V
Data Bit	7, 8
Stop Bit	1, 2
Check Bit	None, Even, Odd
Baud Rate	TTL: 1200 bps~460800 bps
Flow Control	No flow control
Software	
Collocation Method	APP
Firmware update	Serial port or OTA network upgrade
Basic Parameters	
Size	Wport-W71-X(2M): 40±0.3mm x 25.1±0.2mm x 4.5±0.3mm Wport-W71-AA-X(2M): 40±0.3mm x 25.1±0.2mm x 13.3±0.3mm
Working Temperature	-40 ~ 85°C -40 ~ 105°C (For high-temperature versions, please contact our company)
Storage Environment	-45 ~ 105°C, 5 ~ 95% RH (No condensation water)
Humidity Sensitivity Level	MSL3
Input Voltage	2.9~3.6V
Average Current	Peak (1ms in 100 milliseconds):<350mA Average (STA, networked standby): 40mA Average (STA, 1KB/s): 60mA Average (AP): 70mA Standby mode: 310uA (Reset pin pulled low)

1.3. Main Application Areas

Wport-W71-X (2M) connects serial devices to the Internet and transmits serial data in accordance with the TCP/IP protocol.

- Monitoring of photovoltaic solar energy and energy storage;

2. HARDWARE INTRODUCTION

Wport-W71-X (2M) is a WiFi+BLE solution for serial device networking, which enables data transmission through routers, making product integration very easy. It is divided into two models based on the antenna form: -0 and -1. Additionally, the -AA model represents the module with default soldered pins.

2.1. Hardware Introduction

The appearance of the module is as follows.

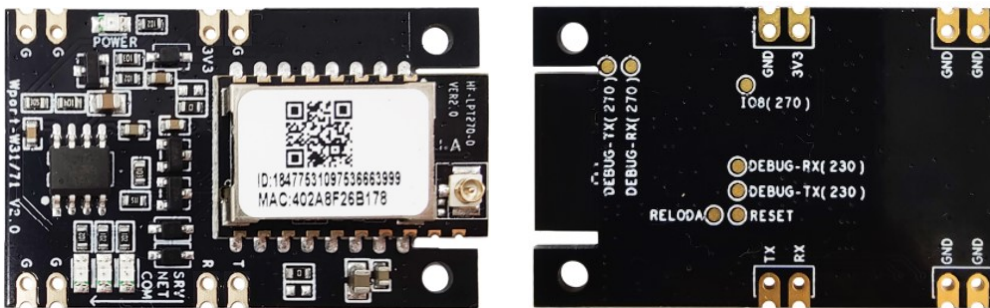


Figure 1. Wport-W71-0(2M) Appearance Diagram

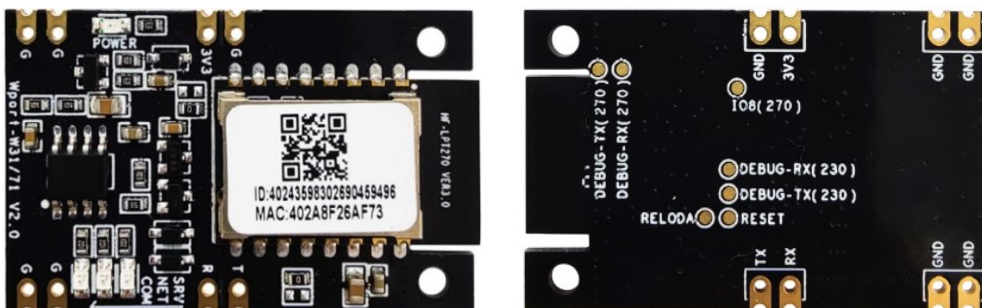


Figure 2. Wport-W71-1(2M) Appearance Diagram

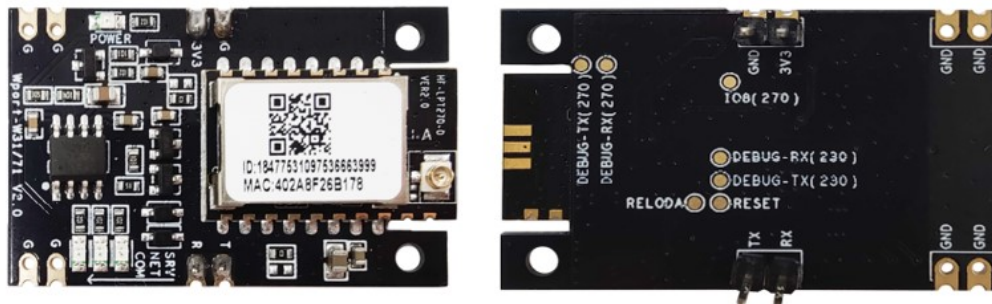


Figure 3. Wport-W71-AA-0(2M) Appearance Diagram

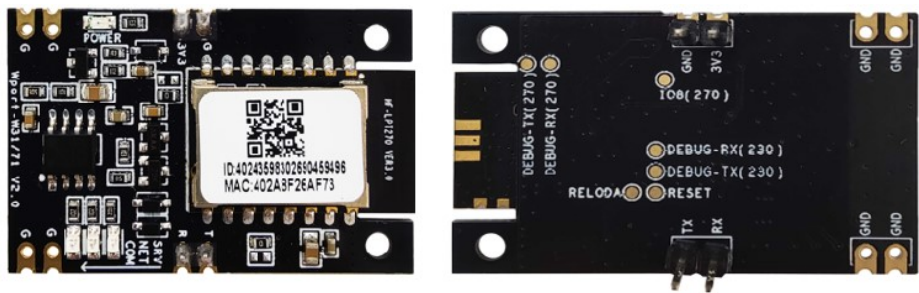


Figure 4. Wport-W71-AA-1(2M) Appearance Diagram

2.1.1. Wport-W71 Pin Definition

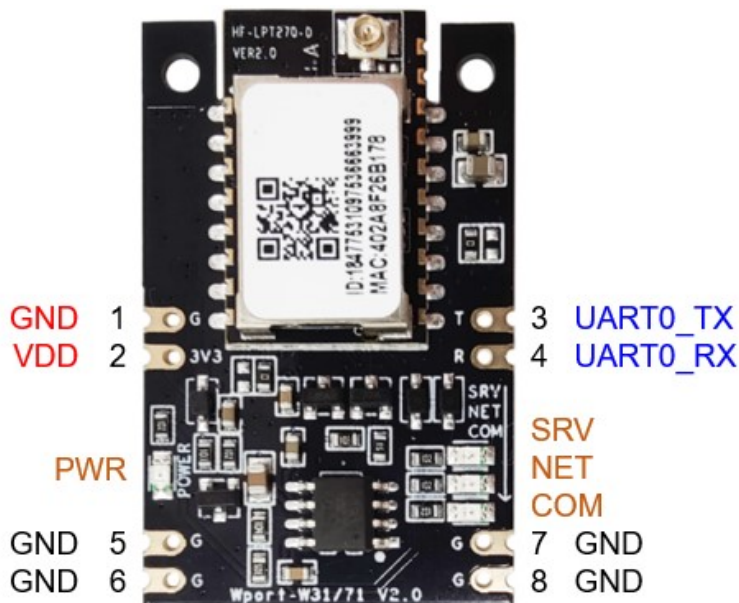


Figure 5. Wport-W71 Pin Definition

Table2. Wport-W71 Pin Function Definition

Pin	Description	Network Name	Signal Type	Note
1, 5, 6, 7, 8	Ground	GND	Power	
2	+3.3V power	VDD	Power	
3	UART0	UART0_TX	O	3.3V TTL communication serial port 0 output GPIO16
4	UART0	UART0_RX	I	3.3V TTL communication serial port 0 input GPIO7
On board indicator light				
	Power supply indicator light	PWR	O	On: 3.3V power supply is normal Off: Abnormal 3.3V power supply
	Server	SRV	O	Low effectiveness.

	Connection LED			On: Connected to server Off: Not connected to the server GPIO12, if not in use, please hang it
	Network status indicator light	NET	IPU/O	Off for 0.3 seconds, on for 3 seconds: Connect to the router in STA mode Off for 0.3 seconds, on for 0.3 seconds: STA is not connected to the router GPIO5, if not in use, please hang it
	Serial transmission indicator light	COM	O	Off: No data interaction Off for 0.3 seconds, on for 0.9 seconds: serial port outputs data Off for 0.3 seconds, on for 0.3 seconds: serial port receives data On: Bidirectional sending and receiving. GPIO4, if not in use, please hang it
Module back test point				
		GPIO8	IPD	Default 10K pull-down, start selection: Low level: Starting the program from on-chip Flash High level: Start the program from an external serial port, and use it to burn the program when the chip is empty. This pin is only used for burning programs during production, and users can keep it suspended.
	模组复位	RESET	I, PU	Low effectiveness. Hardware reset input pin, with internal reset circuit and no need to add a pull-up resistor externally
	重置键	Reload	IPU	The default height is high. Press and hold this key (>4S) and release it to restore the module to its factory settings. GPIO3, if not in use, please hang it
	UART1_TX	DEBUG_UART1_TX	O	3.3V TTL debugging serial port 1 output GPIO17
	UART1_RX	DEBUG_UART1_RX	I	3.3V TTL debugging serial port 1 input GPIO11

<Note>:

I - Input; O - output; PU - Internal weak resistance pull-up; PD - Internal weak resistance pull-down; Digital I/O; Power - Power supply

2.2. Wport-W71 Mechanical Dimensions

The dimensions of the Wport-W71 model product are defined as follows (in millimeters).

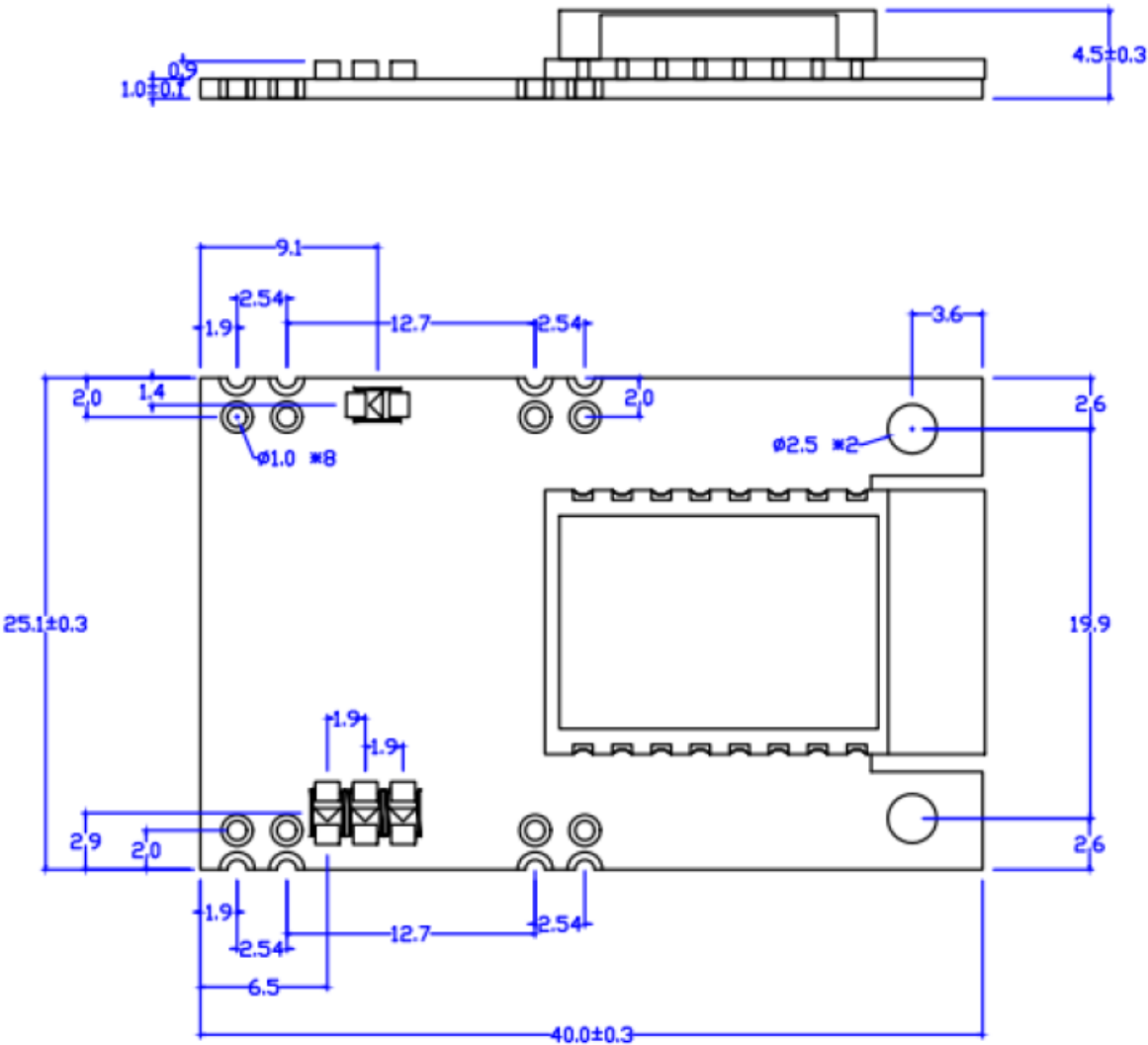


Figure 6. Wport-W71-1/0(2M) Mechanical Dimensions

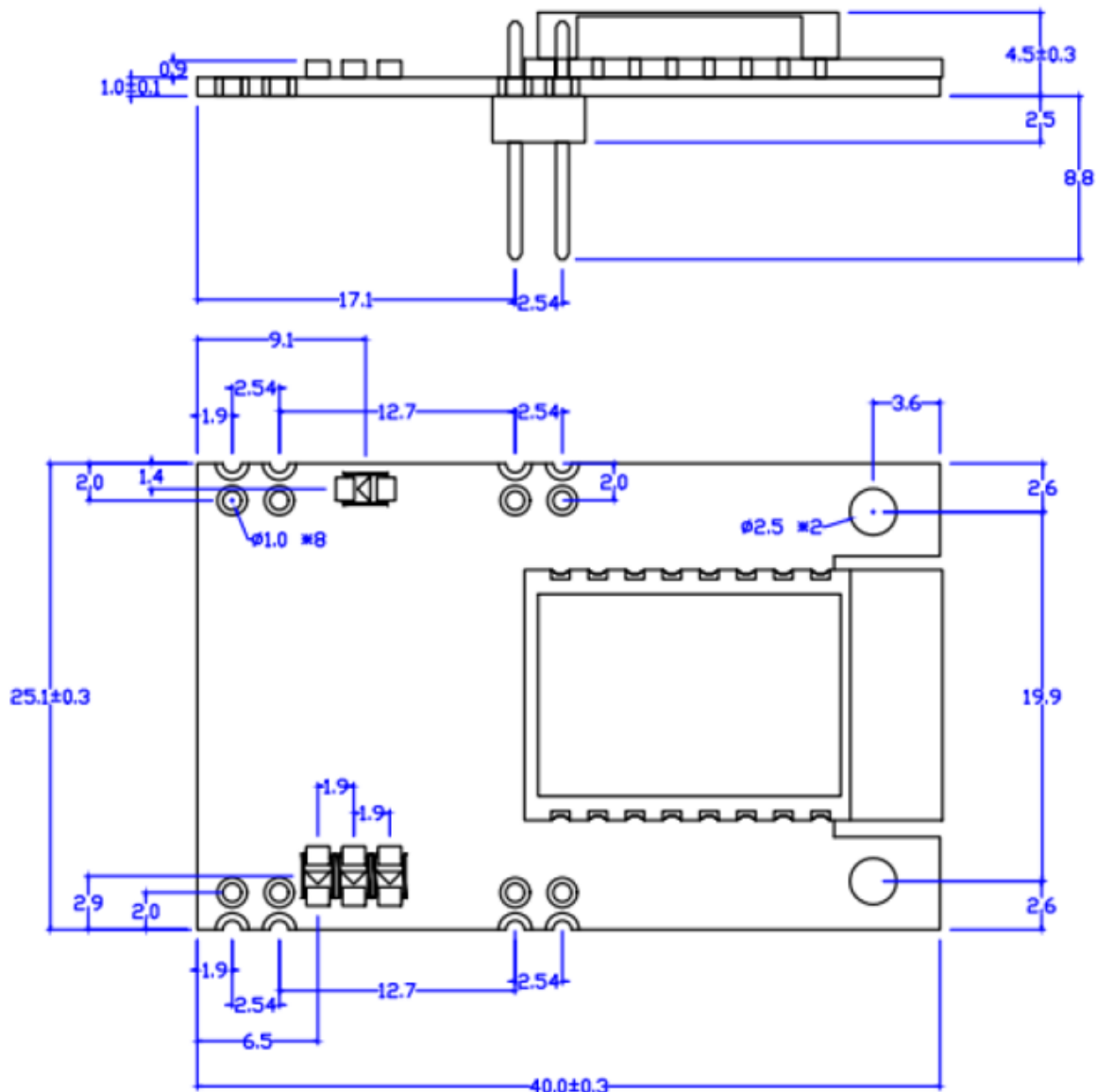


Figure 7. Wport-W71-1/0(2M)-AA Mechanical Dimensions

2.3. Internal Antenna

The module supports built-in antenna options. When customers choose a built-in antenna, they need to follow the following precautions for the built-in antenna and the overall rules for module placement:

- On the user's PCB board, components and GND cannot be placed in the module antenna area (as shown in the red area in the figure below). It is also recommended to excavate or protrude the PCB substrate in the antenna area as shown in the figure below.
- The antenna should be kept away from metal and at least 16 millimeters away from higher components around it;
- The antenna part cannot be covered by a metal shell, and the plastic shell needs to be at least 16 millimeters away from the antenna;

It is recommended to place the module in the following areas of the user board as much as possible to reduce the impact on the antenna and wireless signal. At the same time, please consult technical support personnel to assist in the placement of the module and the layout design of related areas.

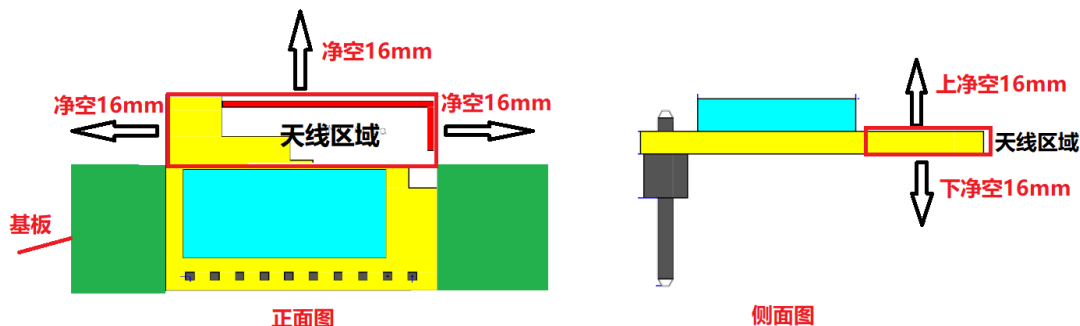


Figure 8. Recommended Placement Area For Module

2.4. External Antenna

The module also provides an external antenna interface (with different models of external and internal antennas), which can be selected by the user according to their needs. If an external antenna is used, according to the requirements of IEEE 802.11b/g/n standard, the WiFi module needs to be connected to a 2.4G antenna. The parameter requirements for external antennas are detailed in the table, and various specifications of external antennas can also be provided for detailed consultation with sales.

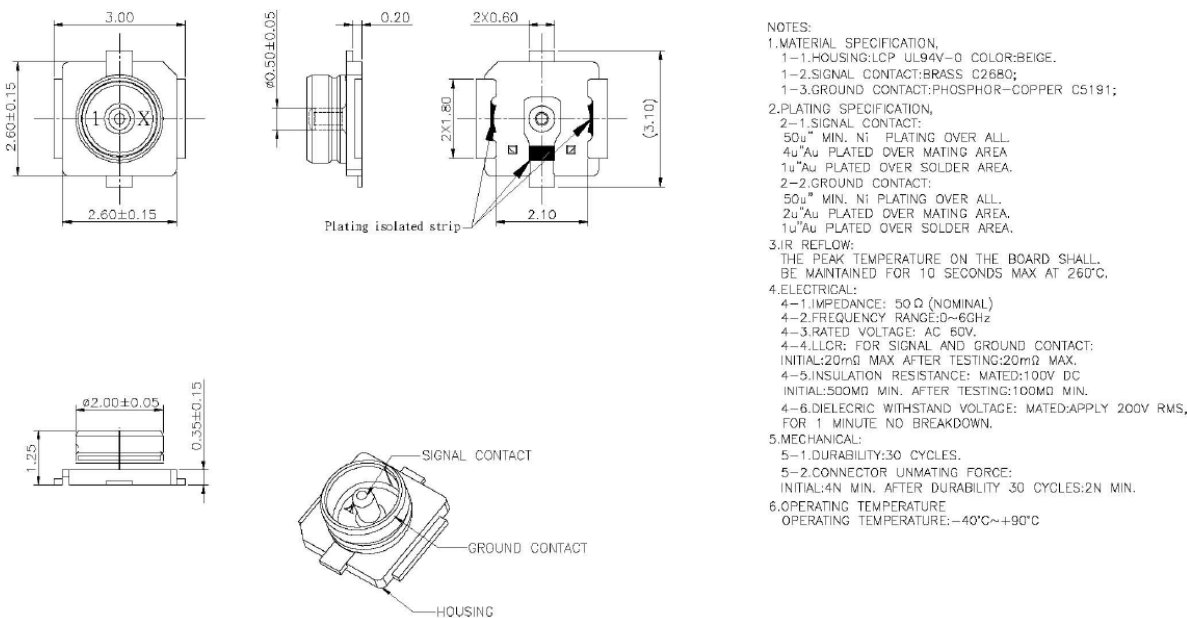


Figure 9. 1st Generation IPEX Pad Size

Table3. Requirements for External Antenna Parameters

Item	Parameter
Frequency Range	2.4~2.5GHz

Impedance	50 Ohm
VSWR	2 (Max)
Return Loss	-10dB (Max)
Connect Type	I-PEX or populate directly
Reset	Reset button

2.5. Product Number

According to customer requirements, Wport-W71-X (2M) provides different configuration versions, as follows:

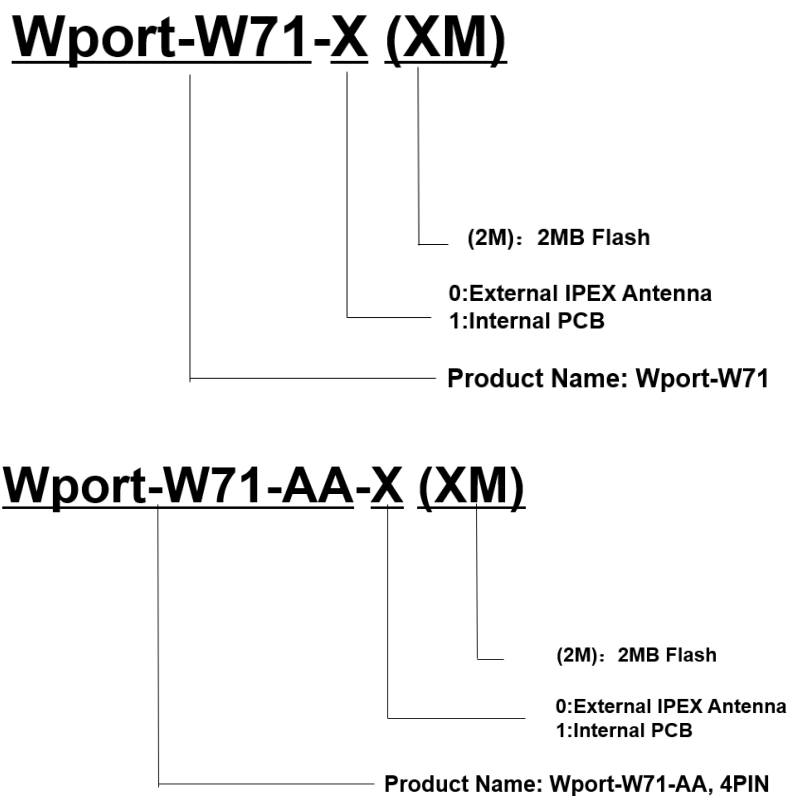


Figure 10. Wport-W71-X(2M) Product Number Definition

2.6. Typical Applications

2.6.1. UART Application Hardware Connection

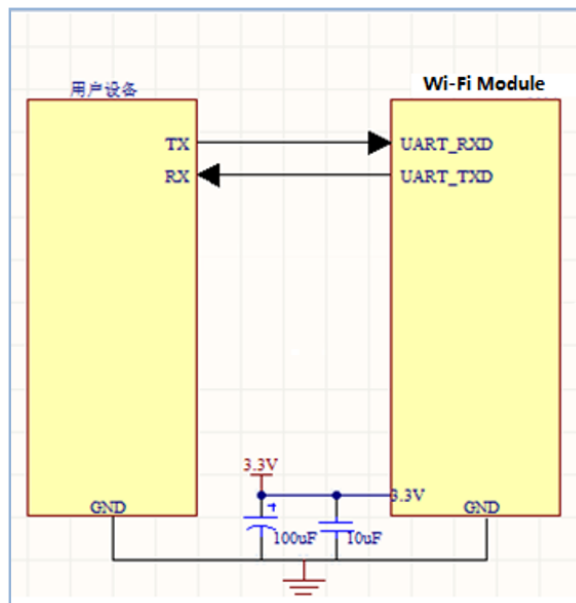


Figure 11. UART Application Hardware Connection

<Note>:

UART0_ TXD/RXD - Serial port data transmission and reception signal.

Connect to the main control MCU. If the main control MCU is 5V TTL, level conversion is required. Please contact us for detailed information.

APPENDIX A: CONTACT INFORMATION
