

---

# D2D 应用

Rev: 1.0

---

## List

1. 产品介绍 .....	3
2. 硬件需求 .....	3
3. 软件需求 .....	3
4. EG10 硬件连接 .....	4
4.1. 测试.....	4

# 1. 产品介绍

本文档适用于如下的产品，本文档以 EG11 作为案例。

## Ethernet IOT

FreeRTOS Embedded Network Device  
[Eport-E20-PIN] [Eport-E20]  
[Eport-E30]  
Linux Embedded Network Device  
[Eport Pro-EP20-PIN] [Eport Pro-EP20]  
Ethernet Serial Server  
[HF5111A] [HF5111B]  
Multiple Port Ethernet Serial Server  
[HF5142A] [HF5142B]

## Wi-Fi IOT

Wi-Fi Serial Module  
[Wport-W20] [Wport-W10]  
Wi-Fi Serial Server  
[HF2211] [DTU-H100]  
Multiple Port Wi-Fi Serial Server  
[HF2221]  
Wifi router (rail)  
[HF8104W]

## GPRS IOT

GPRS Serial Server  
[HF2111] [HF2111A]

## 4G IOT

4G Serial Server  
[HF2411]  
4G+WIFI+GPS Serial Server Device  
[HF2421G]  
4G+WIFI Serial Server  
[HF2421]  
Rail 4G Router  
[HF8102] [HF8104]

## Elfin IOT

4G\_LTE  
[Elfin-EG4X]  
GPRS  
[Elfin-EG1X]  
Wi-Fi  
[Elfin-EW1X]  
Ethernet  
[Elfin-EE1X]

## IO Control

Wi-Fi IO  
[HF6208]  
Ethernet IO  
[HF6508]

# 2. 硬件需求

- Elfin-EG10 2Pcs

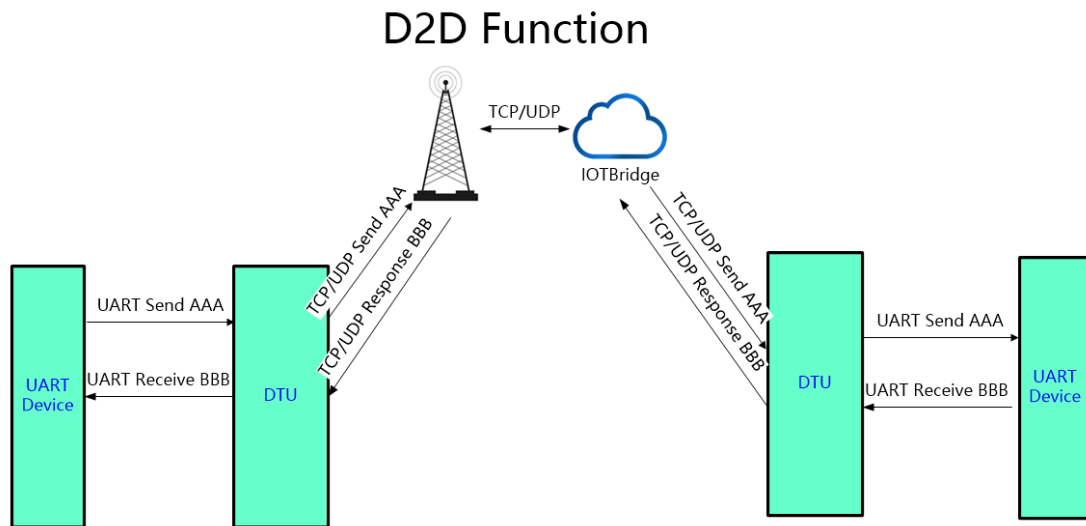
# 3. 软件需求

- UART Tools
- IOTService

## 4. EG10 硬件连接

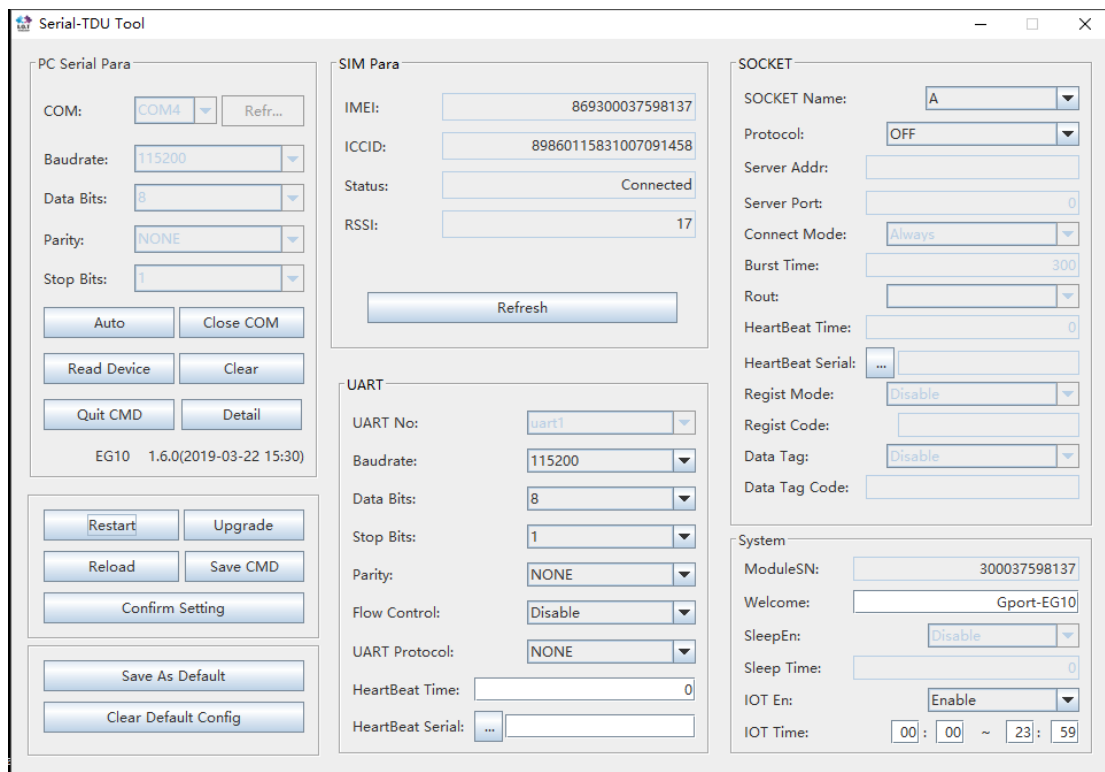
### 4.1. 测试

- 硬件连接

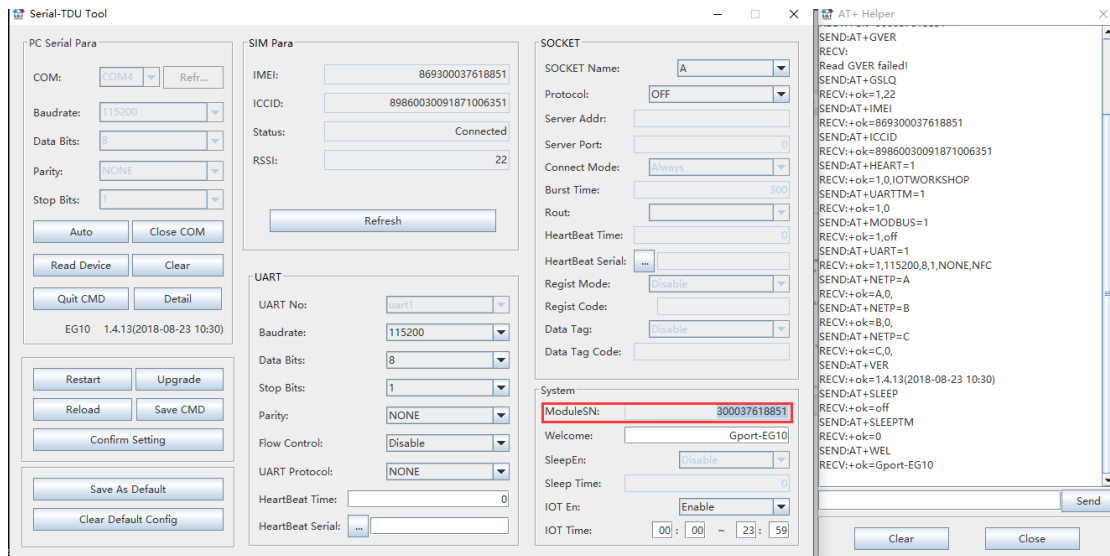


- 打开 IOTService 工具

设备 A: 300037598137

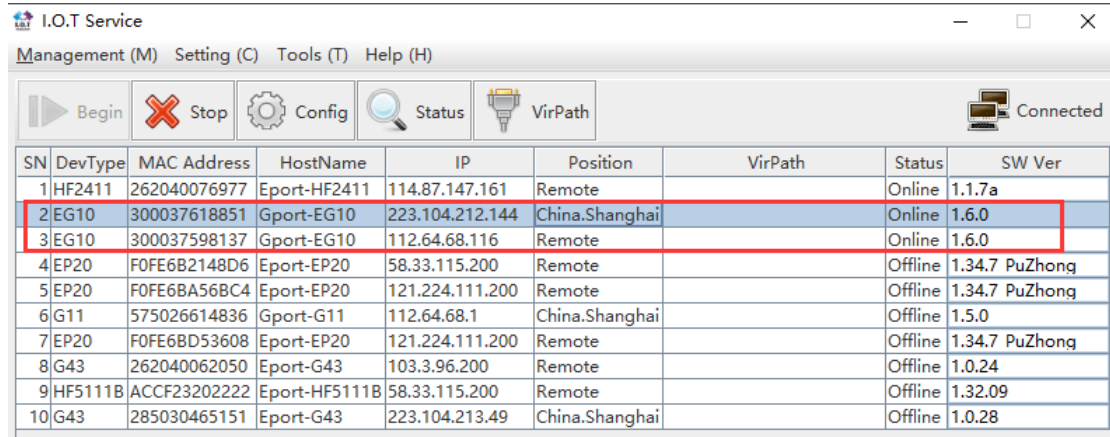
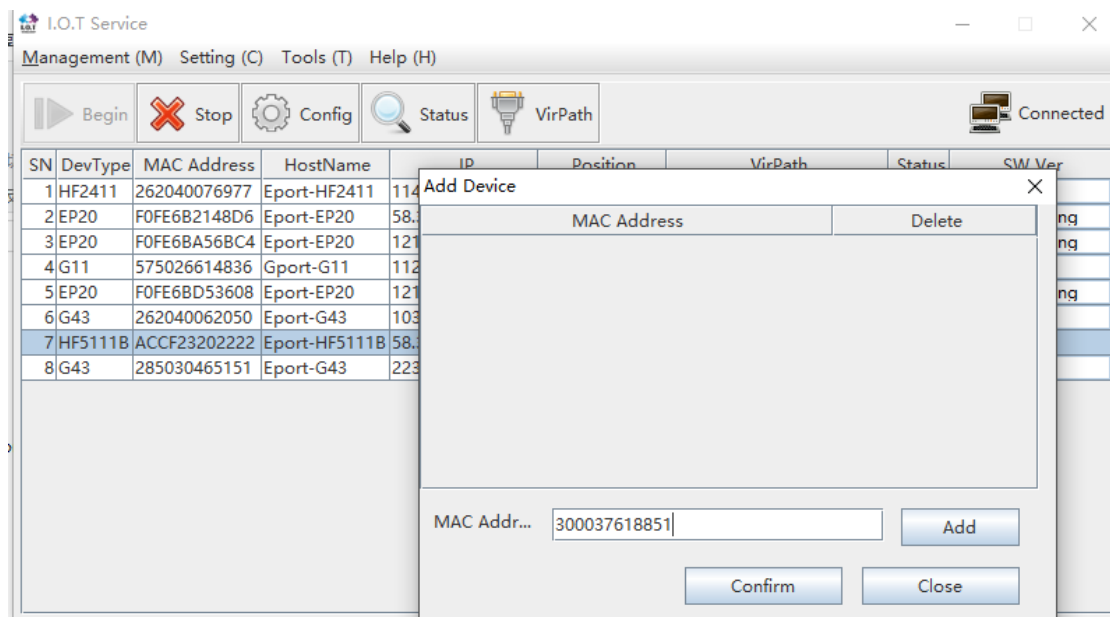


设备 B: 300037618851

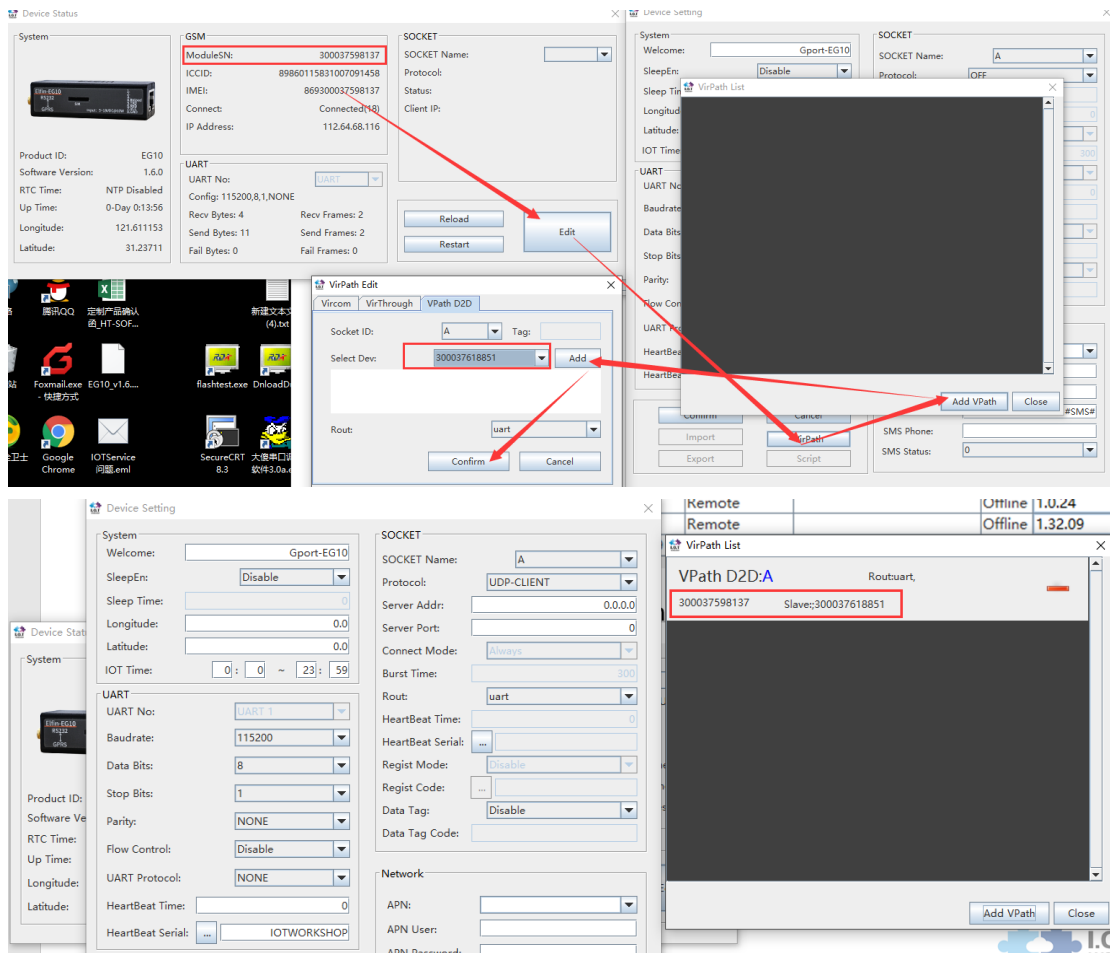


- 绑定添加 EG 设备 (详见 IOTService 工具文档)

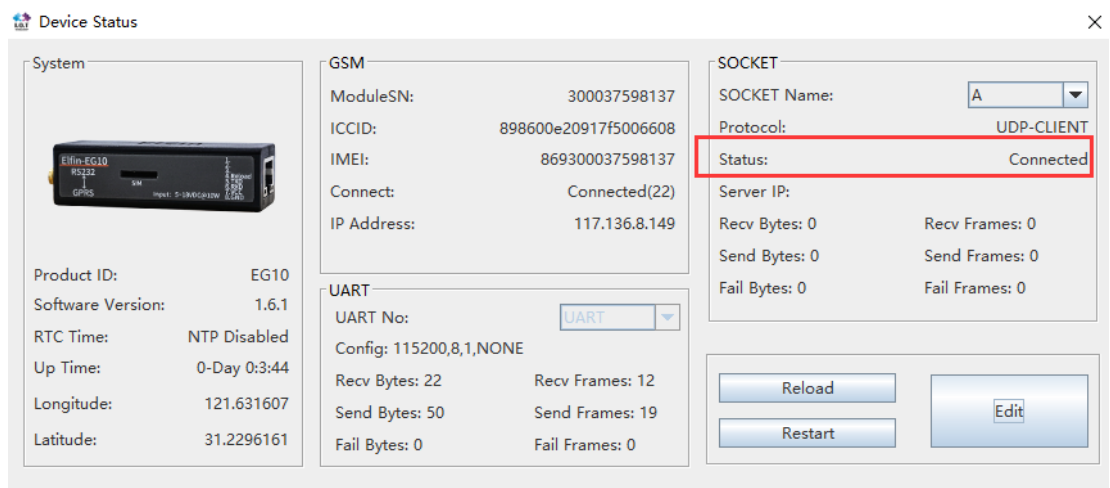
<http://www.hi-flying.com/download-center-1/applications-1/download-item-iot-service>

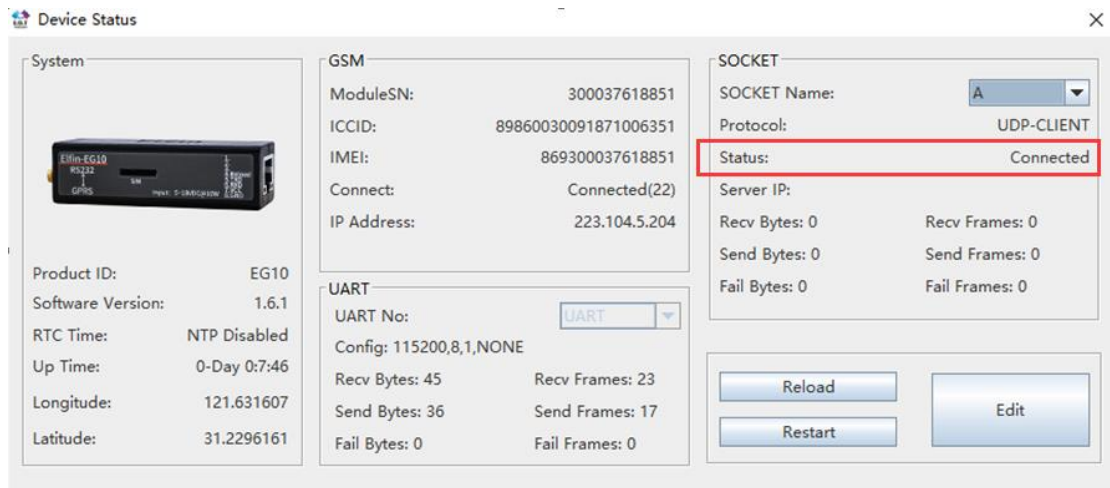


- 配置设备 A, 启用 D2D 功能, A 就作为主设备, B 是从设备。



- 查看设备 A 和 B 的连接状态.





● 相互发送串口数据.

