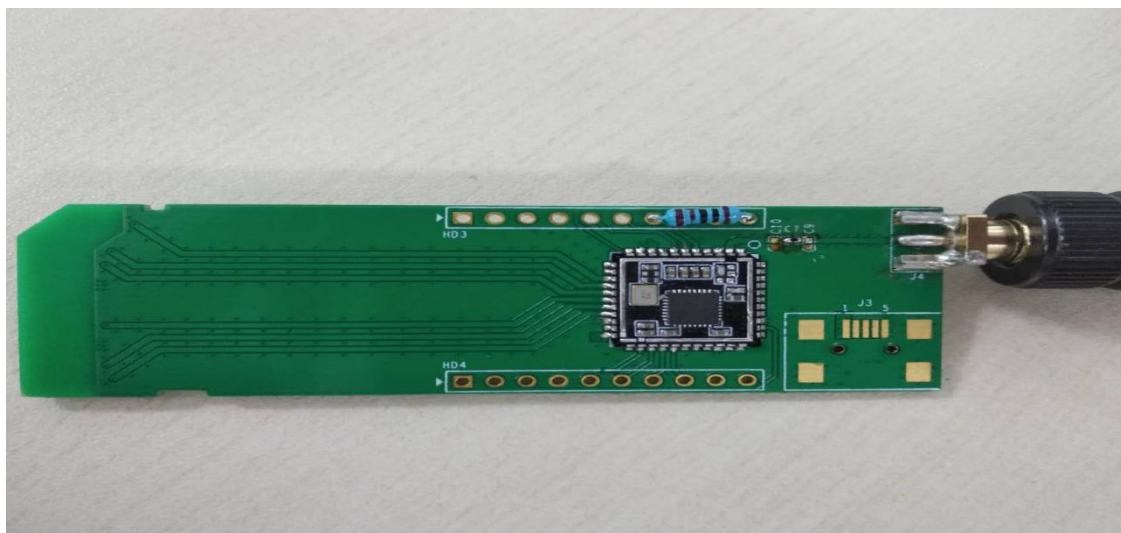


HF-LPS170 嵌入式 SDIO WIFI 模组测试报告



测试工具：

- 1: 1 片 HF-LPS170 测试评估板；
- 2: HF-LPS170 外置天线；
- 3: 2 台笔记本电脑（一台需要有 SDIO 接口）；
- 4: 华硕 ASUS 路由器（型号 RT-AC51U）；
- 5: jperf2.0 网络性能测试工具。

测试条件：

HF-LPS170 模块与另一台电脑处于同一台路由下。插有 HF-LPS170 模块的电脑作为 jperf 服务器（ip:192.168.0.212,port:5001），另一台电脑作为 jperf 客户端（ip:192.168.0.44,port:55810），测试 1000s 内 HF-LPS170 模块的传输速率及带宽。

测试结果：

传输速率（Transfer）基本稳定在 11572~11591Kbytes 之间，平均带宽（Bandwidth）为 94898Kbit/sec。

下图是插有 HF-LPS170 模块的电脑传输速率与带宽截图（注：以下的截图是在模块处于 STA 模式下，作为 jperf 服务器端时的截图）：

```
oot@ubuntu: /home/ubuntu/workspace/bl602_sdio/script
4] 959.0-960.0 sec 11588 KBytes 94928 Kbits/sec
4] 960.0-961.0 sec 11585 KBytes 94908 Kbits/sec
4] 961.0-962.0 sec 11584 KBytes 94899 Kbits/sec
4] 962.0-963.0 sec 11588 KBytes 94925 Kbits/sec
4] 963.0-964.0 sec 11588 KBytes 94928 Kbits/sec
4] 964.0-965.0 sec 11587 KBytes 94923 Kbits/sec
4] 965.0-966.0 sec 11586 KBytes 94911 Kbits/sec
4] 966.0-967.0 sec 11586 KBytes 94911 Kbits/sec
4] 967.0-968.0 sec 11590 KBytes 94943 Kbits/sec
4] 968.0-969.0 sec 11587 KBytes 94923 Kbits/sec
4] 969.0-970.0 sec 11584 KBytes 94899 Kbits/sec
4] 970.0-971.0 sec 11588 KBytes 94925 Kbits/sec
4] 971.0-972.0 sec 11585 KBytes 94905 Kbits/sec
4] 972.0-973.0 sec 11586 KBytes 94914 Kbits/sec
4] 973.0-974.0 sec 11587 KBytes 94920 Kbits/sec
4] 974.0-975.0 sec 11584 KBytes 94899 Kbits/sec
4] 975.0-976.0 sec 11588 KBytes 94925 Kbits/sec
4] 976.0-977.0 sec 11585 KBytes 94908 Kbits/sec
4] 977.0-978.0 sec 11587 KBytes 94920 Kbits/sec
4] 978.0-979.0 sec 11584 KBytes 94899 Kbits/sec
4] 979.0-980.0 sec 11587 KBytes 94920 Kbits/sec
4] 980.0-981.0 sec 11585 KBytes 94905 Kbits/sec
4] 981.0-982.0 sec 11586 KBytes 94911 Kbits/sec
4] 982.0-983.0 sec 11587 KBytes 94922 Kbits/sec
4] 983.0-984.0 sec 11588 KBytes 94925 Kbits/sec
4] 984.0-985.0 sec 11588 KBytes 94928 Kbits/sec
4] 985.0-986.0 sec 11587 KBytes 94923 Kbits/sec
4] 986.0-987.0 sec 11577 KBytes 94838 Kbits/sec
4] 987.0-988.0 sec 11589 KBytes 94934 Kbits/sec
4] 988.0-989.0 sec 11588 KBytes 94928 Kbits/sec
4] 989.0-990.0 sec 11586 KBytes 94916 Kbits/sec
4] 990.0-991.0 sec 11590 KBytes 94946 Kbits/sec
4] 991.0-992.0 sec 11585 KBytes 94908 Kbits/sec
4] 992.0-993.0 sec 11591 KBytes 94952 Kbits/sec
4] 993.0-994.0 sec 11588 KBytes 94925 Kbits/sec
4] 994.0-995.0 sec 11586 KBytes 94911 Kbits/sec
4] 995.0-996.0 sec 11590 KBytes 94949 Kbits/sec
4] 996.0-997.0 sec 11585 KBytes 94905 Kbits/sec
4] 997.0-998.0 sec 11589 KBytes 94940 Kbits/sec
4] 998.0-999.0 sec 11588 KBytes 94928 Kbits/sec
4] 999.0-1000.0 sec 11587 KBytes 94917 Kbits/sec
4] 0.0-1000.0 sec 11584808 KBytes 94898 Kbits/sec
```

下图是另一台电脑 jperf2.0 图形化界面显示的传输速率与带宽截图：

