

# User Manual and Test Guide

---

HF2111

Operation Guide

## Content

1. SERIAL SERVER CONNECTION .....	3
1.1 HF2111 Connection .....	3
2. SERIAL CONFIGURTION .....	3
2.1. Serial Tool SecureCRT .....	4
2.2. Configure Serial Parameter .....	4
3. CREATE NETWORK CONNECTION BY IOTSERIALTOOL .....	5
3.1. IOTSerialTool Introduction .....	5
3.2. Test One: Configure Network by IOTSerialTool .....	5
3.3. Test Case Two: Congifure by Network .....	10

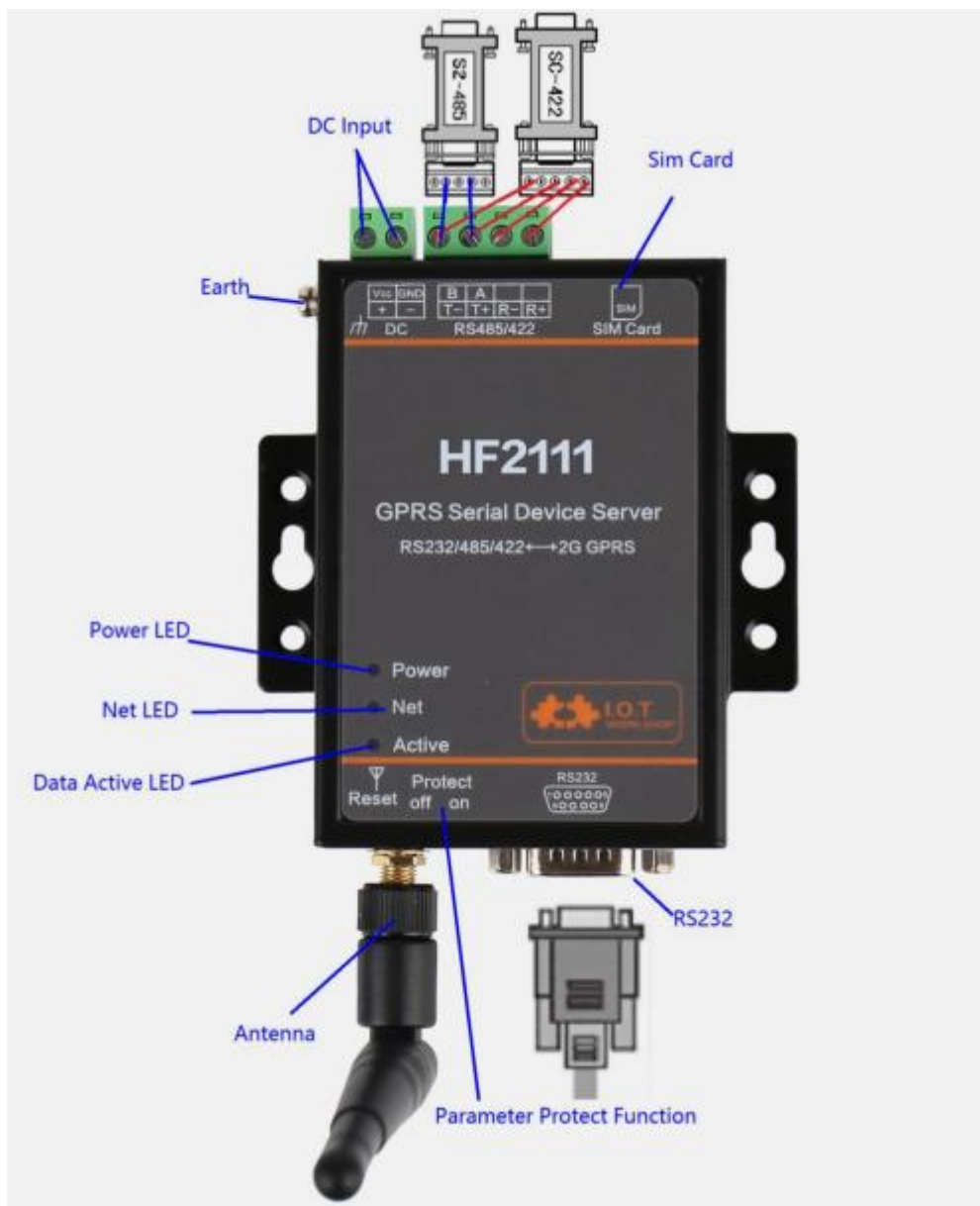
Version List:

2017-10-20 First Draft

# 1. SERIAL SERVER CONNECTION

## 1.1 HF2111 Connection

When users acquire our device and use recommended 9v power adapter to connect product. Otherwise, it will contribute to abnormal function. HF2111 supports China Unicom/China Mobile 2/3/4G standard sim card, not for China Telecom. After HF2111 is powered on and connect to network successfully, it needs about 30s to wait light Net turn to be green. If any data transmit to server by HF2111, light Active will blink.




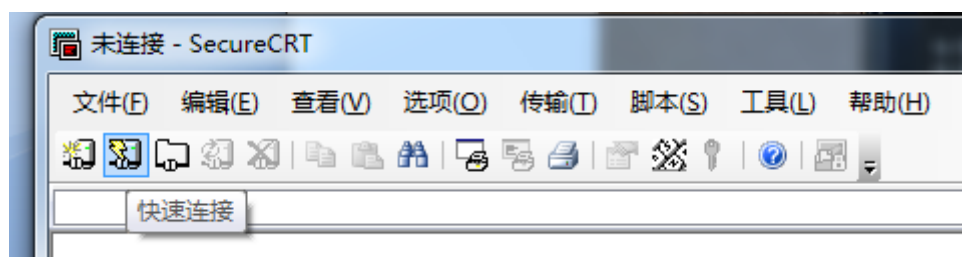
## 2. SERIAL CONFIGURATION

## 2.1. Serial Tool SecureCRT

下载地址：[http://gb.hi-flying.com/download\\_detail\\_dc/downloadsId=22.html](http://gb.hi-flying.com/download_detail_dc/downloadsId=22.html)

解压文件夹，打开找到 SecureCRT 可执行程序， SecureCRT.exe  
SecureCRT Application  
VanDyke Software, Inc. ，点击打开。

点击快速连接按钮  ，创建连接。

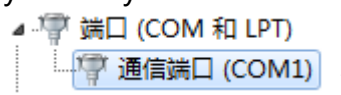


## 2.2. Configure Serial Parameter

Protocol : Serial

Port: Actual connection port(search by "My PC" -> "Device

Manager" -> "Port(COM and LPT)" . As figure:



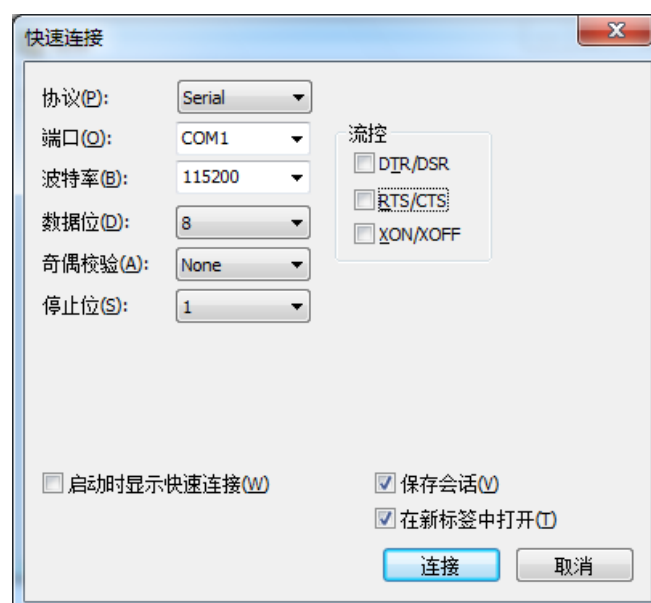
Baud Rate : 115200

Data Bits : 8

Parity Check Bit : None

Stop Bit : 1

Flow Control : None ( Please tick off "√" before RTS/CTS )



Notes: HF2111 the default serial data is as above and user can modify device working parameter by IOTService.

## 3. CREATE NETWORK CONNECTION BY IOTSERIALTOOL

### 3.1. IOTSerialTool Introduction

IOTSerialTool download address:

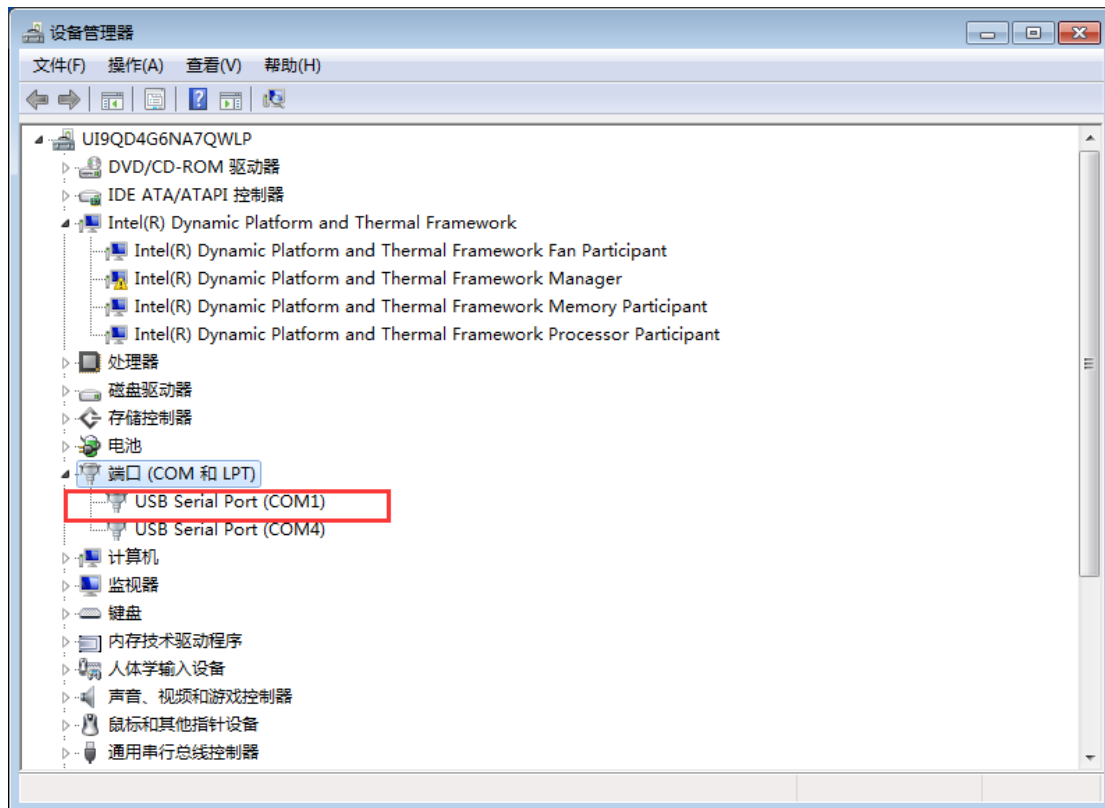
<http://www.hi-flying.com/download-center-1/applications-1>



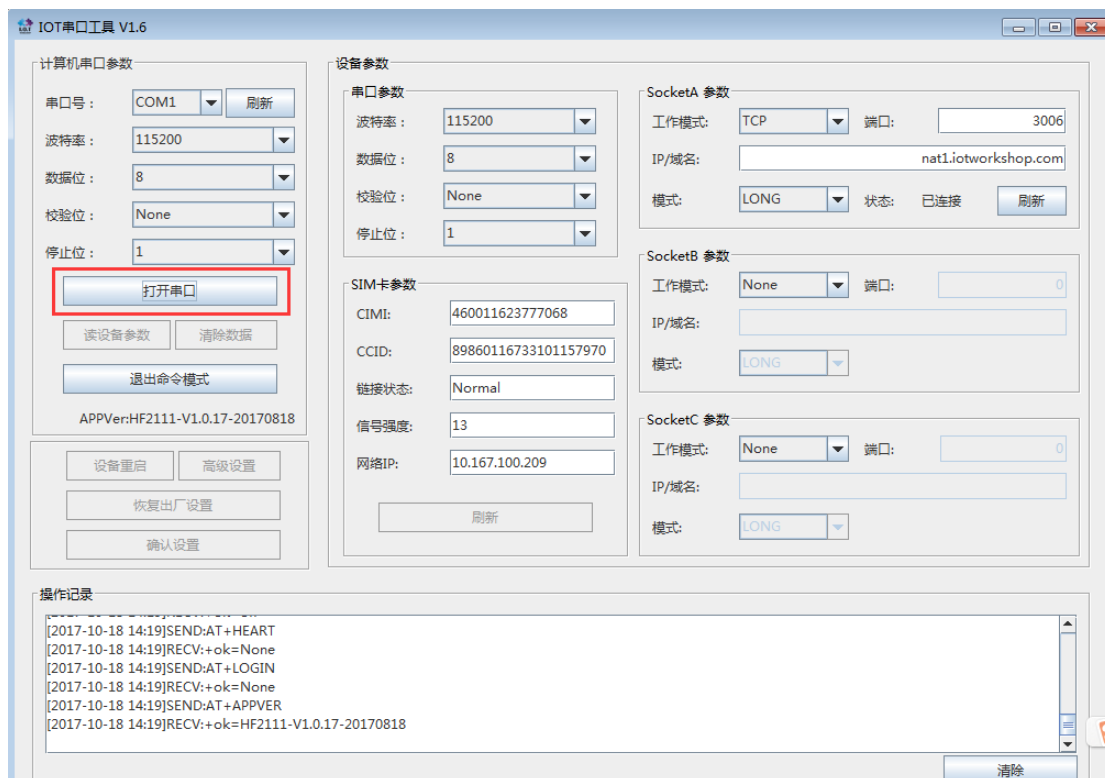
IOTSerialTool is a visual software based on HF2111 serial optimization and it is developed for convenient network connection. When using this software, other serial tool can not be opened at the same time(because port will be occupied). Users can rapidly configure socket and heartbeat function by IOTSerialTool. Specific explanation can refer to chapter 3 in HF2111 user manual.

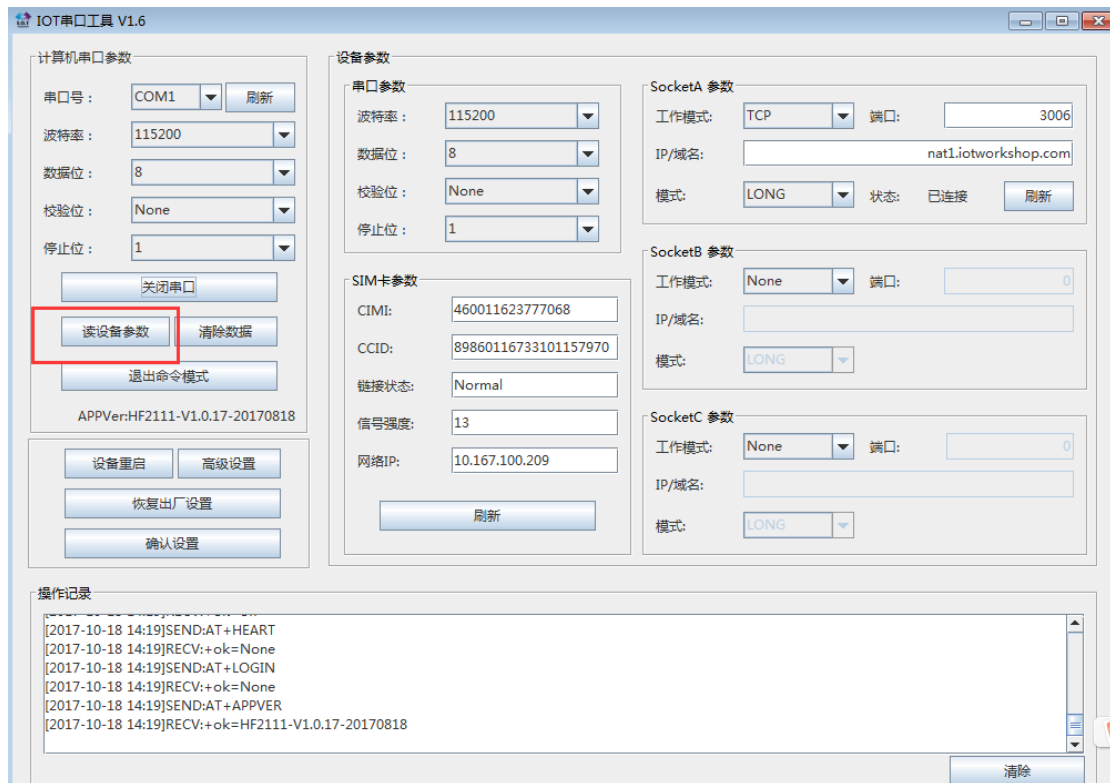
### 3.2. Test One: Configure Network by IOTSerialTool

Step1 : Product uses RS232/485/422 cross serial cable connected with PC. Open device manager to search connected com number.



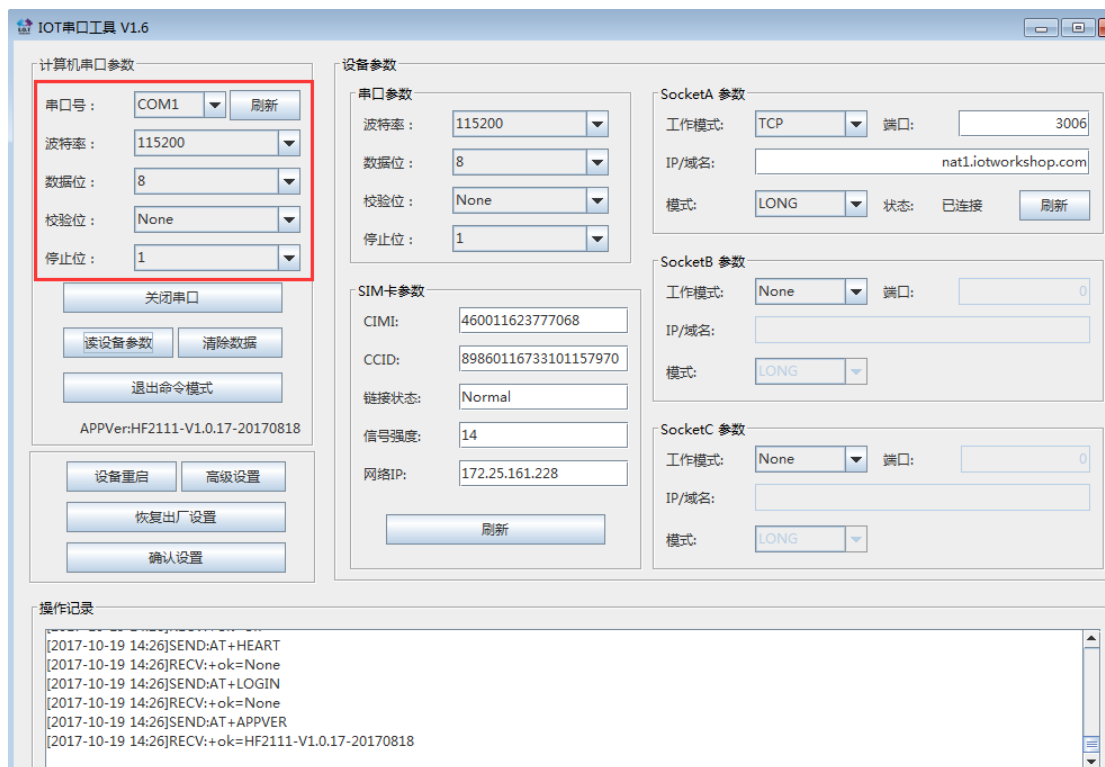
Step 2 : Open IOTSerialTool and click serial port->read device parameter(sim card information)



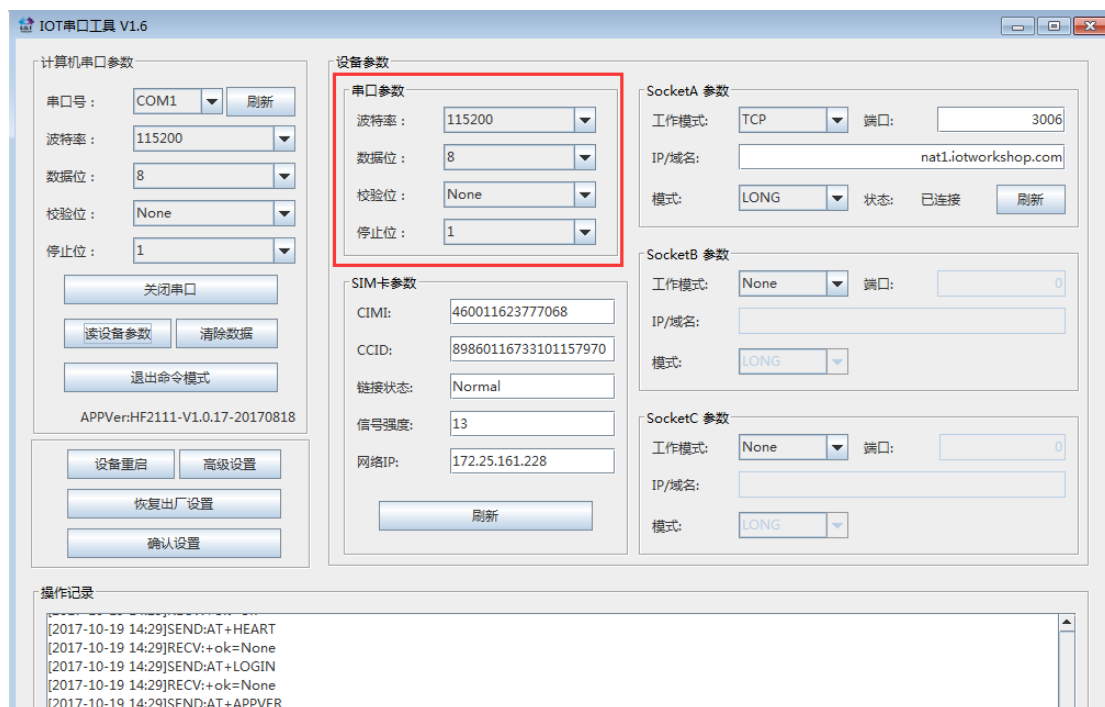


Note: Why reading data fails?

1. Check if sim card is successfully used(only for Unicom and Mobile card)
2. Check if serial cable is successfully connected(please use cross serial line)
3. It needs about 30s to generate network connection(led Net lights on). It cannot read information of sim card before device boots up.
4. Check if serial parameter has been successfully set, factory default parameter is 115200,8,N,1

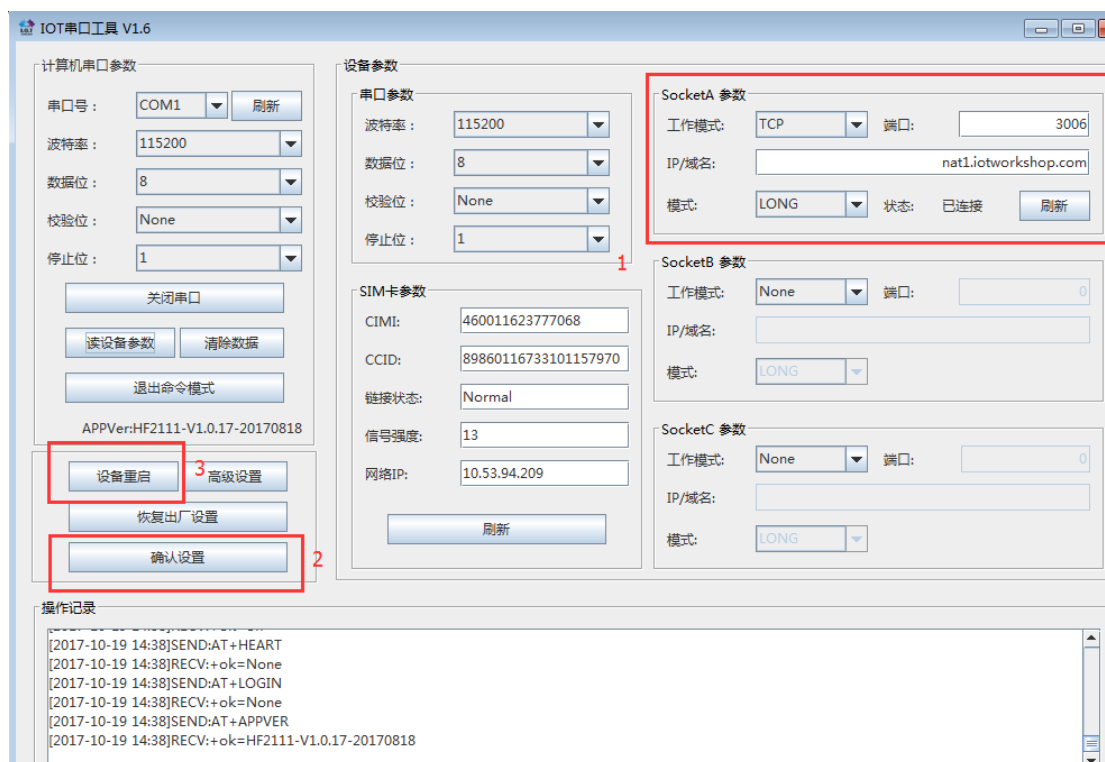


Step 3 : Configure relative serial parameter according to user lower-layer device.

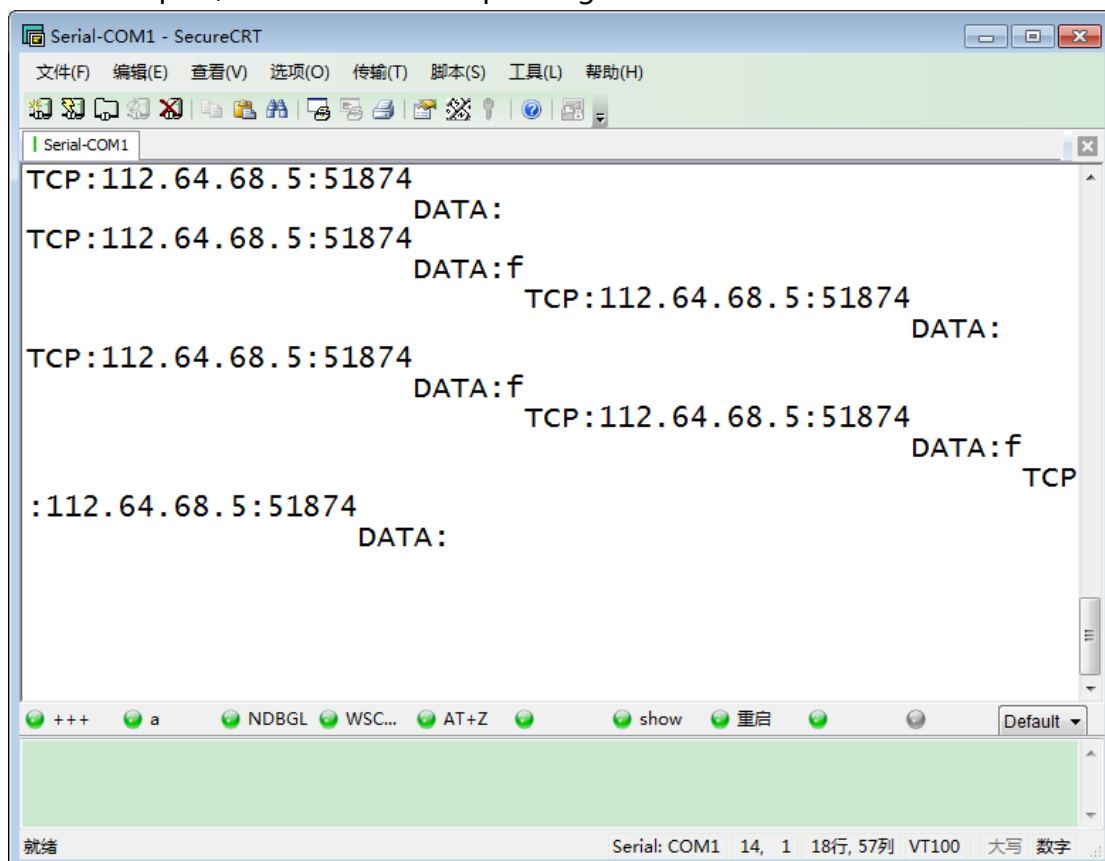


Step 4 : Configure socket to generate network connection. Confirm and restart product.

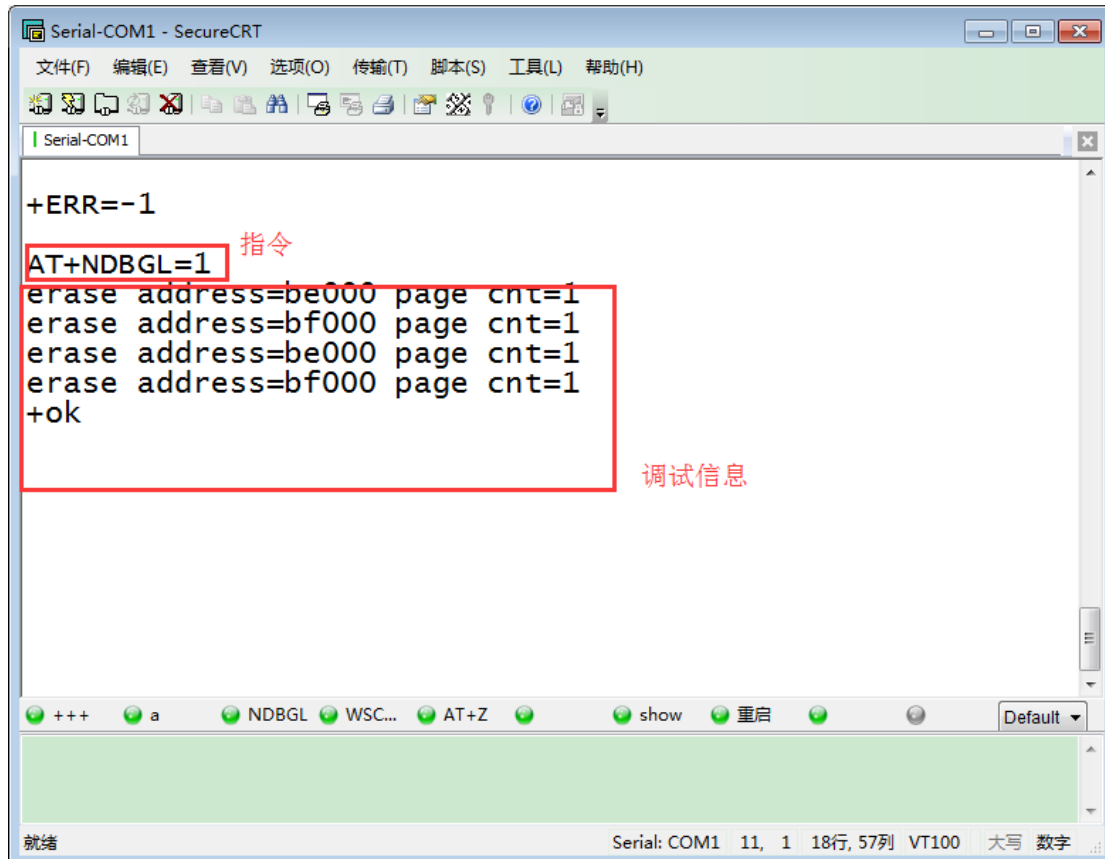




Step 5 : Parameter of socketa from upper figure is IP address and port number of our test server. User can configure and check if HF2111 is working normally. After configure successfully and close IOTSerialTool, open SecureCRT. After sending data from serial port, it can show the responding data.



Step 6 : If product cannot build generation with server, please type the following command. Output log information from SecureCRT and discuss solution with Hi-flying.



The screenshot shows a SecureCRT terminal window titled 'Serial-COM1 - SecureCRT'. The terminal displays the following text:

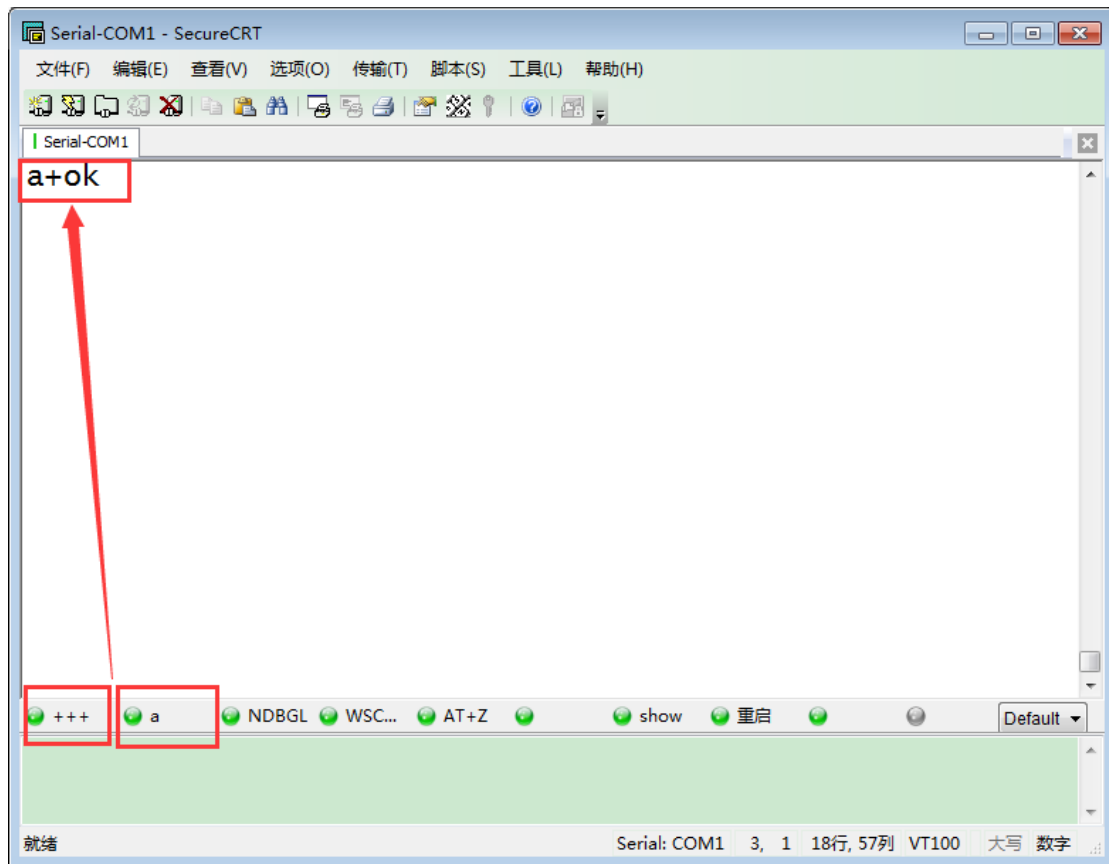
```
+ERR=-1
AT+NDBGL=1
erase address=be000 page cnt=1
erase address=bf000 page cnt=1
erase address=be000 page cnt=1
erase address=bf000 page cnt=1
+ok
```

Red annotations are present: a red box around 'AT+NDBGL=1' with the label '指令' (Command) next to it, and another red box around the four 'erase' lines with the label '调试信息' (Debug Information) next to it.

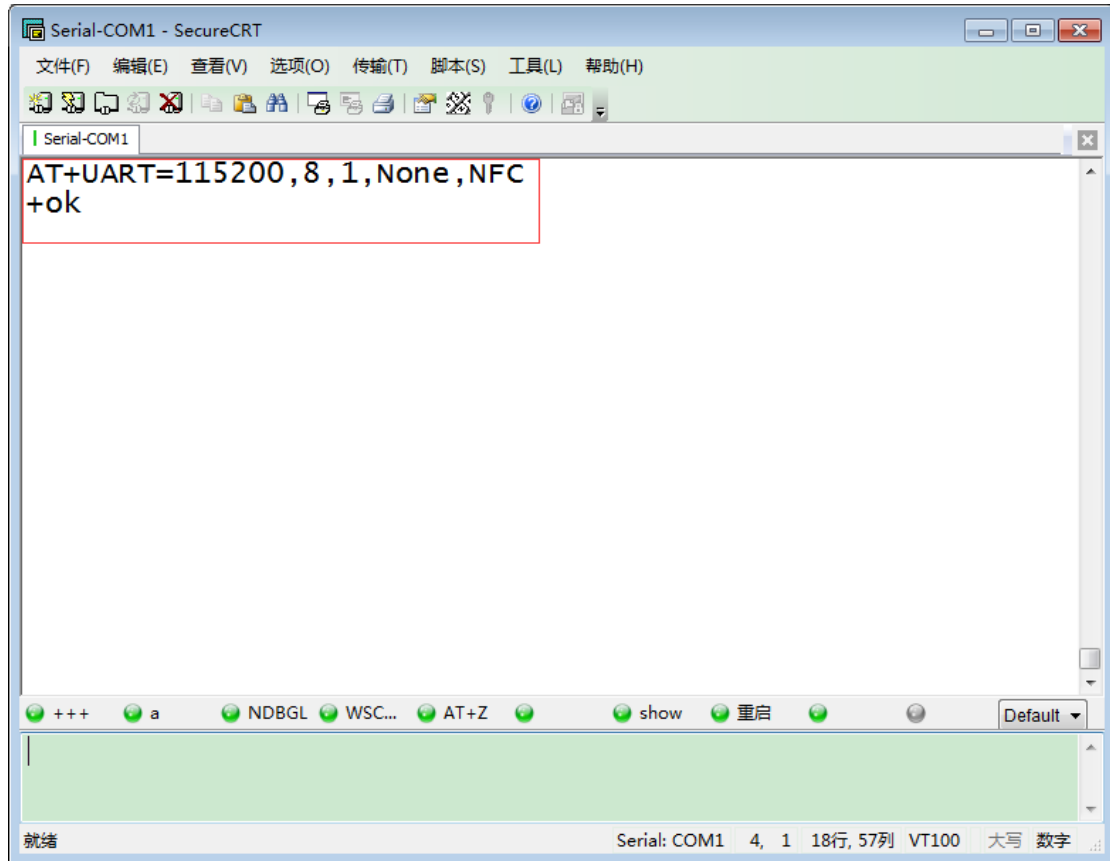
At the bottom of the terminal window, there is a status bar showing 'Serial: COM1 11, 1 18行, 57列 VT100 大写 数字'.

### 3.3. Test Case Two: Congifure by Network

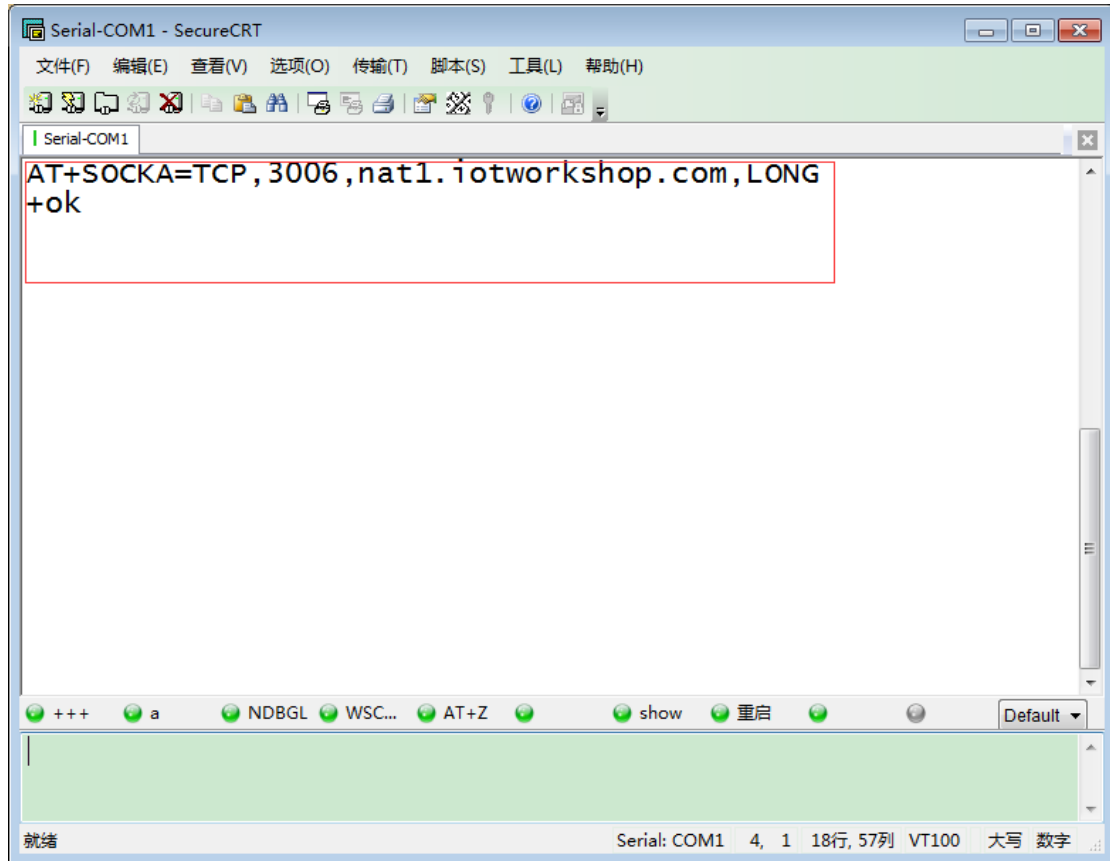
Step 1 : Open SecureCRT and input command +++ and a to enter into command mode.



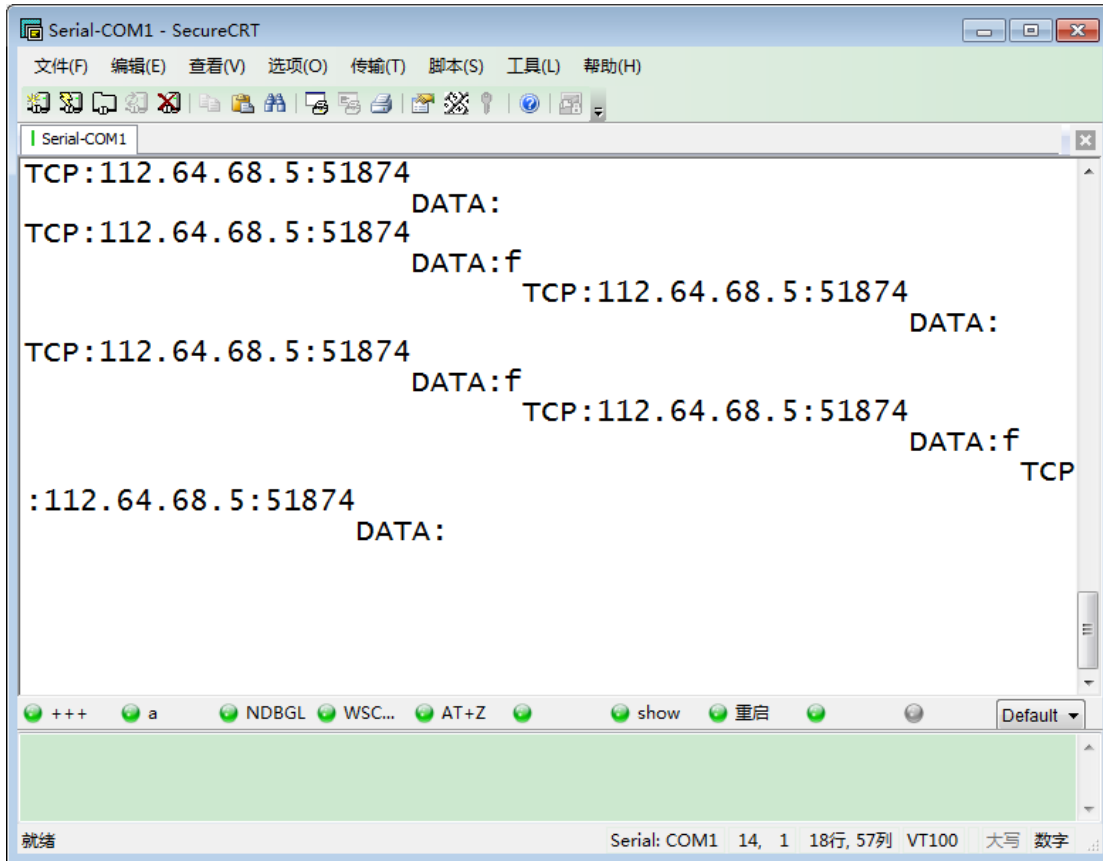
Step 2 : Input AT+UART to search and configure serial parameter. Specific situation can refer to chapter 4 in HF2111 user manual.



Step 3 : Input command " AT+SOCKA=TCP,3006,nat1.iotworkshop.com,LONG " to set socket. And type AT+Z to restart HF2111.



Step 4 : By sending data from serial port, it can show responding data from server.(Default mode is transparent). If not, please type " AT+ENTM " to enter in.



The screenshot shows a SecureCRT terminal window titled "Serial-COM1 - SecureCRT". The window contains the following text:

```
TCP:112.64.68.5:51874
DATA:
TCP:112.64.68.5:51874
DATA:f
TCP:112.64.68.5:51874
DATA:
TCP:112.64.68.5:51874
DATA:f
TCP:112.64.68.5:51874
DATA:f
TCP:
:112.64.68.5:51874
DATA:
```

At the bottom of the terminal, there is a status bar with the text "就绪" (Ready) on the left and "Serial: COM1 14, 1 18行, 57列 VT100 大写 数字" (Serial: COM1 14, 1 18 rows, 57 columns VT100 Caps Lock Num Lock) on the right. Above the terminal area, there is a toolbar with various icons and a menu bar with the following items: 文件(F), 编辑(E), 查看(V), 选项(O), 传输(T), 脚本(S), 工具(L), 帮助(H).